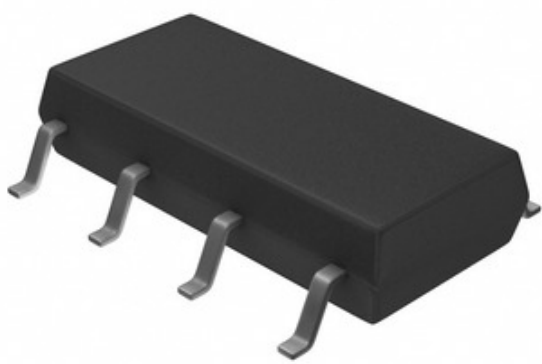




CEL (California Eastern

Laboratories)



PS7160L-2A-A

Part Number:	PS7160L-2A-A
Manufacturer/Brand:	CEL (California Eastern Laboratories)
Product description:	SSR RELAY SPST-NO 90MA 0-600V
Datasheets:	PS7160L-2A-A.pdf
RoHS Status:	Lead free / RoHS Compliant
Stock Condition:	6991 pcs stock
Ship From:	Hong Kong
Shipment Way:	DHL/Fedex/TNT/UPS/EMS

REQUEST FOR QUOTATION

Image may be representation. See specifications for product details.

Specifications of PS7160L-2A-A

PART NUMBER	PS7160L-2A-A
MANUFACTURER	CEL (California Eastern Laboratories)
DESCRIPTION	SSR RELAY SPST-NO 90MA 0-600V
LEAD FREE STATUS / ROHS STATUS	Lead free / RoHS Compliant
QUANTITY AVAILABLE	6991 pcs
DATA SHEET	PS7160L-2A-A.pdf
VOLTAGE - LOAD	0V ~ 600V
VOLTAGE - INPUT	1.2VDC
TERMINATION STYLE	Gull Wing
SUPPLIER DEVICE PACKAGE	8-SMD
SERIES	PS, OCMOS
PACKAGING	Tube
PACKAGE / CASE	8-SMD (0.300", 7.62mm)
OUTPUT TYPE	AC, DC
OTHER NAMES	PS7160L-2AA PS7160L2AA
ON-STATE RESISTANCE (MAX)	50 Ohms
MOUNTING TYPE	Surface Mount
MOISTURE SENSITIVITY LEVEL (MSL)	1 (Unlimited)
LOAD CURRENT	90mA
LEAD FREE STATUS / ROHS STATUS	Lead free / RoHS Compliant
DETAILED DESCRIPTION	Solid State Relay SPST-NO (1 Form A) x 2 8-SMD (0.300", 7.62mm)
CIRCUIT	SPST-NO (1 Form A) x 2

Related Tags

CEL (California Eastern Laboratories) PS7160L-2A-A	PS7160L-2A-A Distributor	PS7160L-2A-A Supplier
PS7160L-2A-A Price	PS7160L-2A-A Pictures	PS7160L-2A-A Image
PS7160L-2A-A PDF Datasheet	PS7160L-2A-A Download Datasheet	PS7160L-2A-A Datasheet
PS7160L-2A-A Stock	Buy PS7160L-2A-A	Buy CEL (California Eastern Laboratories) PS7160L-2A-A
CEL (California Eastern Laboratories) PS7160L-2A-A	CEL (California Eastern Laboratories) Supplier	CEL (California Eastern Laboratories) Distributor
CEL (California Eastern Laboratories) PS7160L-2A-A	California Eastern Labs PS7160L-2A-A	California Eastern Laboratories PS7160L-2A-A
CEL PS7160L-2A-A	CEL (California Eastern Laboratories) PS7160L-2A-A	

Related Products

<p>PS7160-2A Manufacturers: CEL (California Eastern Laboratories) Description: SSR RELAY SPST-NO 90MA 0-600V In stock: 6491 pcs</p> <p>RFQ</p>	<p>PS7160L-2A-E3-A Manufacturers: CEL (California Eastern Laboratories) Description: SSR RELAY SPST-NO 90MA 0-600V In stock: 3824 pcs</p> <p>RFQ</p>
<p>PS7200A-1A Manufacturers: CEL (California Eastern Laboratories) Description: SSR RELAY SPST-NO 100MA 0-40V In stock: 2747 pcs</p> <p>RFQ</p>	<p>PS7160L-1A Manufacturers: CEL (California Eastern Laboratories) Description: SSR RELAY SPST-NO 90MA 0-600V In stock: 2821 pcs</p> <p>RFQ</p>
<p>PS7160L-1A-E3-A Manufacturers: CEL (California Eastern Laboratories) Description: SSR RELAY SPST-NO 90MA 0-600V In stock: 4036 pcs</p> <p>RFQ</p>	<p>PS7200A-1A-A Manufacturers: CEL (California Eastern Laboratories) Description: SSR RELAY SPST-NO 100MA 0-40V In stock: 5850 pcs</p> <p>RFQ</p>
<p>PS72-200G Manufacturers: Electroswitch Description: SWITCH PUSHBUTTON DPDT 1A 125V In stock: 5251 pcs</p> <p>RFQ</p>	<p>PS7160L-2A Manufacturers: CEL (California Eastern Laboratories) Description: SSR RELAY SPST-NO 90MA 0-600V In stock: 6833 pcs</p> <p>RFQ</p>
<p>PS7160L-1A-A Manufacturers: CEL (California Eastern Laboratories) Description: SSR RELAY SPST-NO 90MA 0-600V In stock: 7073 pcs</p> <p>RFQ</p>	<p>PS7200A-1A-F3 Manufacturers: CEL (California Eastern Laboratories) Description: SSR RELAY SPST-NO 100MA 0-40V In stock: 5721 pcs</p> <p>RFQ</p>
<p>PS7160-2A-A Manufacturers: CEL (California Eastern Laboratories) Description: SSR RELAY SPST-NO 90MA 0-600V In stock: 6943 pcs</p> <p>RFQ</p>	<p>PS7200A-1A-E3-A Manufacturers: CEL (California Eastern Laboratories) Description: SSR RELAY SPST-NO 100MA 0-40V In stock: 3959 pcs</p> <p>RFQ</p>