

SIISII Semiconductor Corporation

SII Semiconductor Corporation

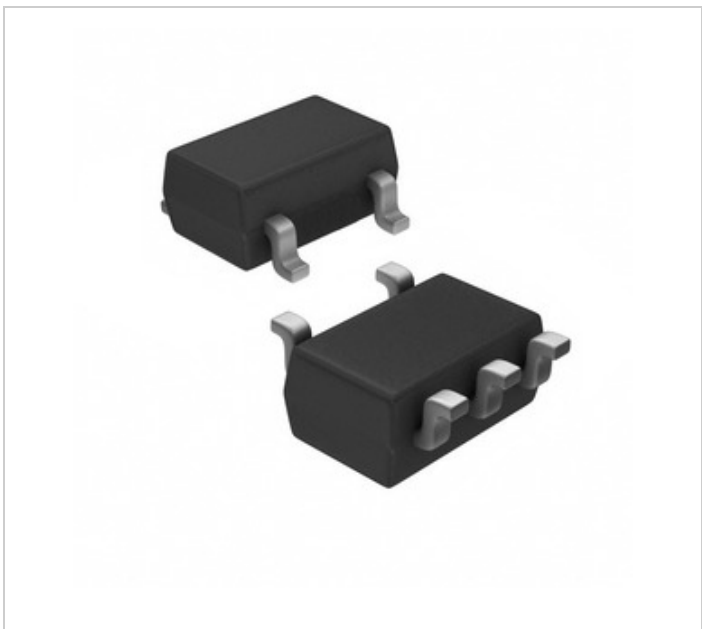





Image may be representation. See specifications for product details.

S-1000C38-M5T1G

Part Number:	S-1000C38-M5T1G
Manufacturer/Brand:	SII Semiconductor Corporation
Product description	IC VOLT DETECTOR 38V SOT23-5
Datasheets:	 S-1000C38-M5T1G.pdf
RoHs Status	 Lead free / RoHS Compliant
Stock Condition	340359 pcs stock
Ship From	Hong Kong
Shipment Way	DHL/Fedex/TNT/UPS/EMS

REQUEST FOR QUOTATION

Specifications of S-1000C38-M5T1G

PART NUMBER	S-1000C38-M5T1G
MANUFACTURER	SII Semiconductor Corporation
DESCRIPTION	IC VOLT DETECTOR 38V SOT23-5
LEAD FREE STATUS / ROHS STATUS	Lead free / RoHS Compliant
QUANTITY AVAILABLE	340359 pcs
DATA SHEET	 S-1000C38-M5T1G.pdf
VOLTAGE - THRESHOLD	3.8V
TYPE	Voltage Detector
SUPPLIER DEVICE PACKAGE	SOT-23-5
SERIES	S-1000
RESET TIMEOUT	-
RESET	Active Low
PACKAGING	Tape & Reel (TR)
PACKAGE / CASE	SC-74A, SOT-753
OUTPUT	Push-Pull, Totem Pole
OPERATING TEMPERATURE	-40°C ~ 85°C (TA)
NUMBER OF VOLTAGES MONITORED	1
MOUNTING TYPE	Surface Mount
MOISTURE SENSITIVITY LEVEL (MSL)	1 (Unlimited)
LEAD FREE STATUS / ROHS STATUS	Lead free / RoHS Compliant
DETAILED DESCRIPTION	Supervisor Push-Pull, Totem Pole 1 Channel SOT-23-5

Related Tags

SII Semiconductor Corporation S-1000C38-M5T1G	S-1000C38-M5T1G Distributor	S-1000C38-M5T1G Supplier
S-1000C38-M5T1G Price	S-1000C38-M5T1G Pictures	S-1000C38-M5T1G Image
S-1000C38-M5T1G PDF Datasheet	S-1000C38-M5T1G Download Datasheet	S-1000C38-M5T1G Datasheet
S-1000C38-M5T1G Stock	Buy S-1000C38-M5T1G	Buy SII Semiconductor Corporation S-1000C38-M5T1G
SII Semiconductor Corporation S-1000C38-M5T1G	SII Semiconductor Corporation Supplier	SII Semiconductor Corporation Distributor
SII Semiconductor Corporation S-1000C38-M5T1G		

Related Products

<div></div> <div>S-1000C37-M5T1U Manufacturers: SII Semiconductor Corporation Description: IC VOLT DETECTOR In stock: 317828 pcs <div>RFQ</div></div>	<div></div> <div>S-1000C38-M5T1U Manufacturers: SII Semiconductor Corporation Description: IC VOLT DETECTOR In stock: 344752 pcs <div>RFQ</div></div>
<div></div> <div>S-1000C39-I4T1G Manufacturers: SII Semiconductor Corporation Description: IC VOLT DETECTOR 39V SNT-4A In stock: 3639 pcs <div>RFQ</div></div>	<div></div> <div>S-1000C37-N4T1G Manufacturers: SII Semiconductor Corporation Description: IC VOLT DETECTOR 37V SC-82AB In stock: 297476 pcs <div>RFQ</div></div>
<div></div> <div>S-1000C38-I4T1G Manufacturers: SII Semiconductor Corporation Description: IC VOLT DETECTOR 38V SNT-4A In stock: 5618 pcs <div>RFQ</div></div>	<div></div> <div>S-1000C38-N4T1U Manufacturers: SII Semiconductor Corporation Description: IC VOLT DETECTOR In stock: 290659 pcs <div>RFQ</div></div>
<div></div> <div>S-1000C39-I4T1U Manufacturers: SII Semiconductor Corporation Description: IC VOLT DETECTOR 39V SNT-4A In stock: 349737 pcs <div>RFQ</div></div>	<div></div> <div>S-1000C37-M5T1G Manufacturers: SII Semiconductor Corporation Description: IC VOLT DETECTOR 37V SOT23-5 In stock: 331290 pcs <div>RFQ</div></div>
<div></div> <div>S-1000C38-N4T1G Manufacturers: SII Semiconductor Corporation Description: IC VOLT DETECTOR 38V SC-82AB In stock: 362783 pcs <div>RFQ</div></div>	<div></div> <div>S-1000C39-M5T1G Manufacturers: SII Semiconductor Corporation Description: IC VOLT DETECTOR 39V SOT23-5 In stock: 288110 pcs <div>RFQ</div></div>
<div></div> <div>S-1000C37-N4T1U Manufacturers: SII Semiconductor Corporation Description: IC VOLT DETECTOR In stock: 340369 pcs <div>RFQ</div></div>	<div></div> <div>S-1000C38-I4T1U Manufacturers: SII Semiconductor Corporation Description: IC VOLT DETECTOR 38V SNT-4A In stock: 374859 pcs <div>RFQ</div></div>