

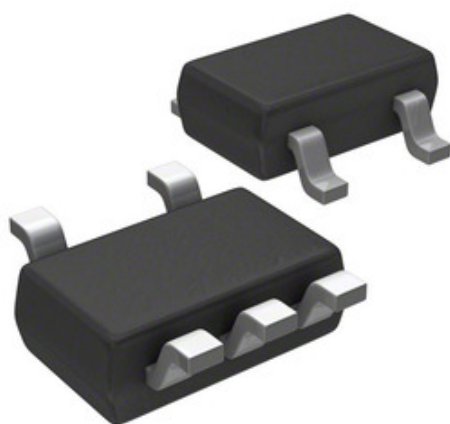
**Diodes Incorporated**

Image may be representation. See specifications for product details.

**PAM3101DUB180**

Part Number:

PAM3101DUB180

Manufacturer/Brand:

Diodes Incorporated

### Product description

IC REG LINEAR 1.8V 300MA SC70-5

Datasheets:

 PAM3101DUB180.pdf

RoHS Status

✓ Lead free / RoHS Compliant

### Stock Condition

3520 pcs stock

Ship From


Hong Kong

Shipment Way

DHL/Fedex/TNT/UPS/EMS

## REQUEST FOR QUOTATION

## Specifications of PAM3101DUB180

PART NUMBER	PAM3101DUB180
MANUFACTURER	Diodes Incorporated
DESCRIPTION	IC REG LINEAR 1.8V 300MA SC70-5
LEAD FREE STATUS / ROHS STATUS	Lead free / RoHS Compliant
QUANTITY AVAILABLE	3520 pcs
DATA SHEET	 <a href="#">PAM3101DUB180.pdf</a>
VOLTAGE DROPOUT (MAX)	1.1V @ 300mA
VOLTAGE - OUTPUT (MIN/FIXED)	1.8V
VOLTAGE - OUTPUT (MAX)	-
VOLTAGE - INPUT (MAX)	5.5V
SUPPLIER DEVICE PACKAGE	SC-70-5
SERIES	-
PROTECTION FEATURES	Over Current, Over Temperature, Short Circuit
PACKAGE / CASE	5-TSSOP, SC-70-5, SOT-353
PSRR	70dB ~ 65dB (100Hz ~ 1kHz)
OUTPUT TYPE	Fixed
OUTPUT CONFIGURATION	Positive
OPERATING TEMPERATURE	-40°C ~ 85°C
NUMBER OF REGULATORS	1
MOUNTING TYPE	Surface Mount
LEAD FREE STATUS / ROHS STATUS	Lead free / RoHS Compliant
DETAILED DESCRIPTION	Linear Voltage Regulator IC 1 Output 300mA SC-70-5
CURRENT - SUPPLY (MAX)	90μA
CURRENT - QUIESCENT (IQ)	90μA
CURRENT - OUTPUT	300mA
CONTROL FEATURES	Enable

## Related Tags

Diodes Incorporated PAM3101DUB180	PAM3101DUB180 Distributor	PAM3101DUB180 Supplier
PAM3101DUB180 Price	PAM3101DUB180 Pictures	PAM3101DUB180 Image
PAM3101DUB180 PDF Datasheet	PAM3101DUB180 Download Datasheet	PAM3101DUB180 Datasheet
PAM3101DUB180 Stock	Buy PAM3101DUB180	Buy Diodes Incorporated PAM3101DUB180
Diodes Incorporated PAM3101DUB180	Diodes Incorporated Supplier	Diodes Incorporated Distributor
Diodes Incorporated PAM3101DUB180	Diodes Inc PAM3101DUB180	Pericom Semiconductor PAM3101DUB180
Zetex Semiconductors (Diodes Incorporated) PAM3101DUB180		

## Related Products

 <p><b>PAM3101FKF180</b> Manufacturers: Diodes Incorporated Description: IC REG LINEAR 1.8V 300MA 6DFN In stock: 3874 pcs</p> <p>RFQ</p>	 <p><b>PAM3101DAB400</b> Manufacturers: Diodes Incorporated Description: IC REG LINEAR 4V 300MA SOT23-5 In stock: 5186 pcs</p> <p>RFQ</p>
 <p><b>PAM3101FKF250</b> Manufacturers: Diodes Incorporated Description: IC REG LINEAR 2.5V 300MA 6DFN In stock: 6070 pcs</p> <p>RFQ</p>	 <p><b>PAM3101DUB150</b> Manufacturers: Diodes Incorporated Description: IC REG LINEAR 1.5V 300MA SC70-5 In stock: 6411 pcs</p> <p>RFQ</p>
 <p><b>PAM3101DUB280</b> Manufacturers: Diodes Incorporated Description: IC REG LINEAR 2.8V 300MA SC70-5 In stock: 4014 pcs</p> <p>RFQ</p>	 <p><b>PAM3101DUB330</b> Manufacturers: Diodes Incorporated Description: IC REG LINEAR 3.3V 300MA SC70-5 In stock: 4938 pcs</p> <p>RFQ</p>
 <p><b>PAM3101DAB310</b> Manufacturers: Diodes Incorporated Description: IC REG LINEAR 3.1V 300MA SOT23-5 In stock: 6590 pcs</p> <p>RFQ</p>	 <p><b>PAM3101FKF150</b> Manufacturers: Diodes Incorporated Description: IC REG LINEAR 1.5V 300MA 6DFN In stock: 5626 pcs</p> <p>RFQ</p>
 <p><b>PAM3101DUB120</b> Manufacturers: Diodes Incorporated Description: IC REG LINEAR 1.2V 300MA SC70-5 In stock: 6045 pcs</p> <p>RFQ</p>	 <p><b>PAM3101DAB475</b> Manufacturers: Diodes Incorporated Description: IC REG LIN 4.75V 300MA SOT23-5 In stock: 6688 pcs</p> <p>RFQ</p>
 <p><b>PAM3101FKF200</b> Manufacturers: Diodes Incorporated Description: IC REG LINEAR 2V 300MA 6DFN In stock: 6662 pcs</p> <p>RFQ</p>	 <p><b>PAM3101DAB330</b> Manufacturers: Diodes Incorporated Description: IC REG LINEAR 3.3V 300MA SOT23-5 In stock: 5228 pcs</p> <p>RFQ</p>