

SII  SII Semiconductor Corporation

SII Semiconductor Corporation

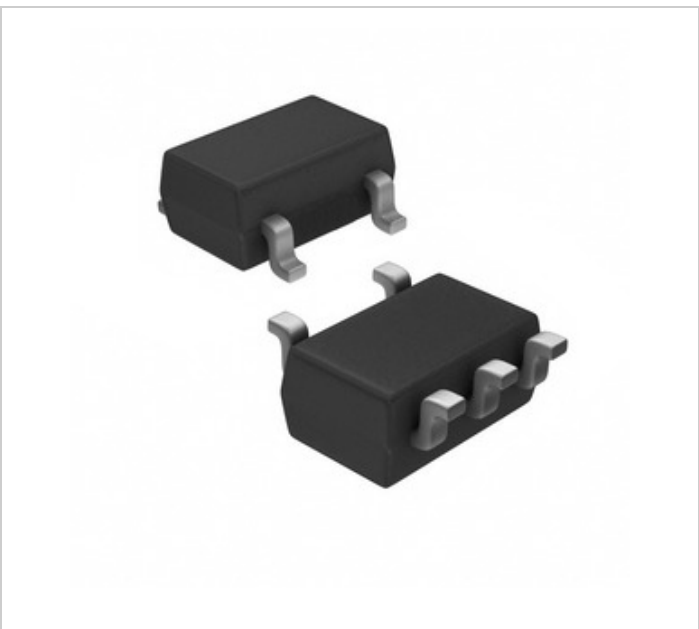





Image may be representation. See specifications for product details.

S-1135D20-U5T1U

Part Number:	S-1135D20-U5T1U
Manufacturer/Brand:	SII Semiconductor Corporation
Product description	IC REG LINEAR 2V 300MA SOT23-5
Datasheets:	 S-1135D20-U5T1U.pdf
RoHs Status	 Lead free / RoHS Compliant
Stock Condition	240655 pcs stock
Ship From	Hong Kong
Shipment Way	DHL/Fedex/TNT/UPS/EMS

REQUEST FOR QUOTATION

Specifications of S-1135D20-U5T1U

PART NUMBER	S-1135D20-U5T1U
MANUFACTURER	SII Semiconductor Corporation
DESCRIPTION	IC REG LINEAR 2V 300MA SOT23-5
LEAD FREE STATUS / ROHS STATUS	Lead free / RoHS Compliant
QUANTITY AVAILABLE	240655 pcs
DATA SHEET	 S-1135D20-U5T1U.pdf
VOLTAGE - OUTPUT (MIN/FIXED)	2V
VOLTAGE - OUTPUT (MAX)	-
VOLTAGE - INPUT (MAX)	5.5V
SUPPLIER DEVICE PACKAGE	SOT-23-5
SERIES	S-1135
PROTECTION FEATURES	Over Current
PACKAGING	Tape & Reel (TR)
PACKAGE / CASE	SC-74A, SOT-753
PSRR	65dB (1kHz)
OUTPUT TYPE	Fixed
OUTPUT CONFIGURATION	Positive
OPERATING TEMPERATURE	-40°C ~ 85°C (TA)
NUMBER OF REGULATORS	1
MOUNTING TYPE	Surface Mount
MOISTURE SENSITIVITY LEVEL (MSL)	1 (Unlimited)
LEAD FREE STATUS / ROHS STATUS	Lead free / RoHS Compliant
DETAILED DESCRIPTION	Linear Voltage Regulator IC Positive Fixed 1 Output 2V 300mA SOT-23-5
CURRENT - SUPPLY (MAX)	65µA
CURRENT - QUIESCENT (IQ)	1µA
CURRENT - OUTPUT	300mA
CONTROL FEATURES	Enable

Related Tags

SII Semiconductor Corporation S-1135D20-U5T1U	S-1135D20-U5T1U Distributor	S-1135D20-U5T1U Supplier
S-1135D20-U5T1U Price	S-1135D20-U5T1U Pictures	S-1135D20-U5T1U Image
S-1135D20-U5T1U PDF Datasheet	S-1135D20-U5T1U Download Datasheet	S-1135D20-U5T1U Datasheet
S-1135D20-U5T1U Stock	Buy S-1135D20-U5T1U	Buy SII Semiconductor Corporation S-1135D20-U5T1U
SII Semiconductor Corporation S-1135D20-U5T1U	SII Semiconductor Corporation Supplier	SII Semiconductor Corporation Distributor
SII Semiconductor Corporation S-1135D20-U5T1U		

Related Products

 <div>S-1135D22-M5T1U Manufacturers: SII Semiconductor Corporation Description: IC REG LINEAR 2.2V 300MA SOT23-5 In stock: 269916 pcs RFQ</div>	 <div>S-1135D20-M5T1U Manufacturers: SII Semiconductor Corporation Description: IC REG LINEAR 2V 300MA SOT23-5 In stock: 321646 pcs RFQ</div>
 <div>S-1135D21-M5T1U Manufacturers: SII Semiconductor Corporation Description: IC REG LINEAR 2.1V 300MA SOT23-5 In stock: 309997 pcs RFQ</div>	 <div>S-1135D21-U5T1U Manufacturers: SII Semiconductor Corporation Description: IC REG LINEAR 2.1V 300MA SOT23-5 In stock: 250375 pcs RFQ</div>
 <div>S-1135D22-A6T1U Manufacturers: SII Semiconductor Corporation Description: IC REG LINEAR 2.2V 300MA HSNT6A In stock: 312921 pcs RFQ</div>	 <div>S-1135D21-U5T1G Manufacturers: SII Semiconductor Corporation Description: IC REG LINEAR 2.1V 300MA SOT23-5 In stock: 227679 pcs RFQ</div>
 <div>S-1135D21-A6T1U Manufacturers: SII Semiconductor Corporation Description: IC REG LINEAR 2.1V 300MA HSNT6A In stock: 264625 pcs RFQ</div>	 <div>S-1135D1J-U5T1U Manufacturers: SII Semiconductor Corporation Description: IC REG LIN 1.85V 300MA SOT23-5 In stock: 288603 pcs RFQ</div>
 <div>S-1135D1J-U5T1G Manufacturers: SII Semiconductor Corporation Description: IC REG LIN 1.85V 300MA SOT23-5 In stock: 281332 pcs RFQ</div>	 <div>S-1135D1J-M5T1U Manufacturers: SII Semiconductor Corporation Description: IC REG LIN 1.85V 300MA SOT23-5 In stock: 313784 pcs RFQ</div>
 <div>S-1135D20-U5T1G Manufacturers: SII Semiconductor Corporation Description: IC REG LINEAR 2V 300MA SOT23-5 In stock: 246848 pcs RFQ</div>	 <div>S-1135D20-A6T1U Manufacturers: SII Semiconductor Corporation Description: IC REG LINEAR 2V 300MA HSNT6A In stock: 291124 pcs RFQ</div>