

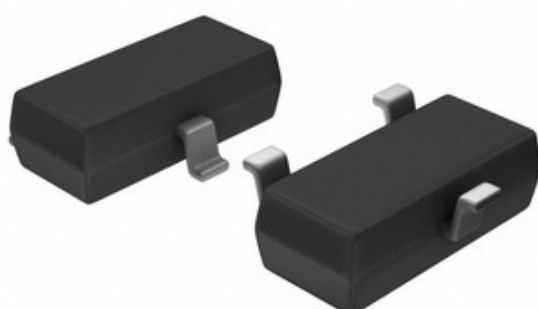
**Diodes Incorporated**

Image may be representation. See specifications for product details.

**ZR285F03TC**

Part Number:

7R285F03TC

Manufacturer/Brand:

Diodes Incorporated

### Product description

IC: VREF SHUNT 2.5V SOT23

Datasheets:



ZR285F03TC.pdf

RoHS Status



Lead free / RoHS Compliant

### Stock Condition

2880 pcs stock

Ship From

Hong Kong

Shipment Way

DHL/Fedex/TNT/UPS/EMS

## REQUEST FOR QUOTATION







### Specifications of 7R285F03TC

PART NUMBER	ZR285F03TC
MANUFACTURER	Diodes Incorporated
DESCRIPTION	IC VREF SHUNT 2.5V SOT23
LEAD FREE STATUS / ROHS STATUS	Lead free / RoHS Compliant
QUANTITY AVAILABLE	2880 pcs
DATA SHEET	<a href="#">PDF ZR285F03TC.pdf</a>
VOLTAGE - OUTPUT (MIN/FIXED)	2.5V
VOLTAGE - INPUT	-
TOLERANCE	±3%
TEMPERATURE COEFFICIENT	90ppm/°C
SUPPLIER DEVICE PACKAGE	SOT-23
SERIES	-
REFERENCE TYPE	Shunt
PACKAGING	Tape & Reel (TR)
PACKAGE / CASE	TO-236-3, SC-59, SOT-23-3
OUTPUT TYPE	Fixed
OPERATING TEMPERATURE	-40°C ~ 85°C (TA)
NOISE - 10HZ TO 10KHZ	60µVrms
NOISE - 0.1HZ TO 10HZ	-
MOUNTING TYPE	Surface Mount
MOISTURE SENSITIVITY LEVEL (MSL)	1 (Unlimited)
LEAD FREE STATUS / ROHS STATUS	Lead free / RoHS Compliant
DETAILED DESCRIPTION	Shunt Voltage Reference IC ±3% 20mA SOT-23
CURRENT - SUPPLY	-
CURRENT - OUTPUT	20mA
CURRENT - CATHODE	20µA
BASE PART NUMBER	ZR285

## Related Tags

Diodes Incorporated ZR285F03TC	ZR285F03TC Distributor	ZR285F03TC Supplier
ZR285F03TC Price	ZR285F03TC Pictures	ZR285F03TC Image
ZR285F03TC PDF Datasheet	ZR285F03TC Download Datasheet	ZR285F03TC Datasheet
ZR285F03TC Stock	Buy ZR285F03TC	Buy Diodes Incorporated ZR285F03TC
Diodes Incorporated ZR285F03TC	Diodes Incorporated Supplier	Diodes Incorporated Distributor
Diodes Incorporated ZR285F03TC	Diodes Inc ZR285F03TC	Pericom Semiconductor ZR285F03TC
Zetex Semiconductors (Diodes Incorporated) ZR285F03TC		

## Related Products

 <p><b>ZR285F02TC</b> Manufacturers: Diodes Incorporated Description: IC VREF SHUNT 2.5V SOT23 In stock: 4567 pcs</p> <p>RFQ</p>	 <p><b>ZR285F02TA</b> Manufacturers: Diodes Incorporated Description: IC VREF SHUNT 2.5V SOT23 In stock: 246762 pcs</p> <p>RFQ</p>
 <p><b>ZR285R01</b> Manufacturers: Diodes Incorporated Description: IC VREF SHUNT 2.5V TO92-3 In stock: 5637 pcs</p> <p>RFQ</p>	 <p><b>ZR2431Z01TA</b> Manufacturers: Diodes Incorporated Description: IC VREF SHUNT ADJ SOT89-3 In stock: 3076 pcs</p> <p>RFQ</p>
 <p><b>ZR285F03TA</b> Manufacturers: Diodes Incorporated Description: IC VREF SHUNT 2.5V SOT23 In stock: 2906 pcs</p> <p>RFQ</p>	 <p><b>ZR285F01TC</b> Manufacturers: Diodes Incorporated Description: IC VREF SHUNT 2.5V SOT23 In stock: 4150 pcs</p> <p>RFQ</p>
 <p><b>ZR285R01STOB</b> Manufacturers: Diodes Incorporated Description: IC VREF SHUNT 2.5V TO92-3 In stock: 2716 pcs</p> <p>RFQ</p>	 <p><b>ZR285R01STZ</b> Manufacturers: Diodes Incorporated Description: IC VREF SHUNT 2.5V TO92-3 In stock: 4253 pcs</p> <p>RFQ</p>
 <p><b>ZR285R01STOA</b> Manufacturers: Diodes Incorporated Description: IC VREF SHUNT 2.5V TO92-3 In stock: 6680 pcs</p> <p>RFQ</p>	 <p><b>ZR2431Z02TA</b> Manufacturers: Diodes Incorporated Description: IC VREF SHUNT ADJ SOT89-3 In stock: 6386 pcs</p> <p>RFQ</p>
 <p><b>ZR285N802TA</b> Manufacturers: Diodes Incorporated Description: IC VREF SHUNT 2.5V 8SOP In stock: 160030 pcs</p> <p>RFQ</p>	 <p><b>ZR285N803TA</b> Manufacturers: Diodes Incorporated Description: IC VREF SHUNT 2.5V 8SO In stock: 5933 pcs</p> <p>RFQ</p>