



Diodes Incorporated

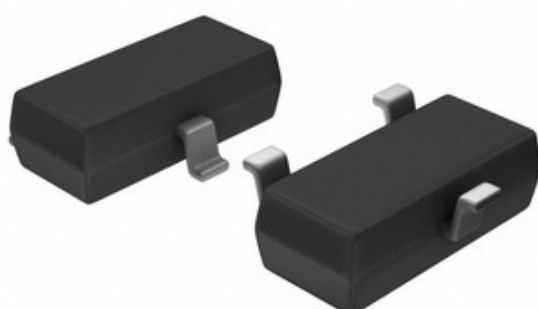


Image may be representation. See specifications for product details.

# ZTL431AFTA

Part Number:

7TI 431AFTA

Manufacturer/Brand:

Diodes Incorporated

### Product description

IC VREF SHUNT ADJ SOT23

Datasheets:



✓ Lead free / RoHS Compliant

961956 pcs stock

### Stock Condition


Hong Kong

Shipment Way

DHL/Fedex/TNT/UPS/EMS

## REQUEST FOR QUOTATION






## Specifications of ZTI 431AFTA

|                                  |  |
|----------------------------------|--|
| PART NUMBER                      | ZTL431AFTA   |
| MANUFACTURER                     | Diodes Incorporated  |
| DESCRIPTION                      | IC VREF SHUNT ADJ SOT23  |
| LEAD FREE STATUS / ROHS STATUS   | Lead free / RoHS Compliant   |
| QUANTITY AVAILABLE               | 961956 pcs   |
| DATA SHEET                       |  <a href="#">ZTL431AFTA.pdf</a> |
| VOLTAGE - OUTPUT (MIN/FIXED)     | 2.5V   |
| VOLTAGE - OUTPUT (MAX)           | 20V  |
| VOLTAGE - INPUT                  | -  |
| TOLERANCE                        | ±1%  |
| TEMPERATURE COEFFICIENT          | -  |
| SUPPLIER DEVICE PACKAGE          | SOT-23   |
| SERIES                           | -  |
| REFERENCE TYPE                   | Shunt  |
| PACKAGING                        | Tape & Reel (TR)   |
| PACKAGE / CASE                   | TO-236-3, SC-59, SOT-23-3  |
| OUTPUT TYPE                      | Adjustable   |
| OTHER NAMES                      | ZTL431AFTR<br>ZTL431AFTT   |
| OPERATING TEMPERATURE            | -40°C ~ 125°C (TA)   |
| NOISE - 10HZ TO 10KHZ            | -  |
| NOISE - 0.1HZ TO 10HZ            | -  |
| MOUNTING TYPE                    | Surface Mount  |
| MOISTURE SENSITIVITY LEVEL (MSL) | 1 (Unlimited)  |
| LEAD FREE STATUS / ROHS STATUS   | Lead free / RoHS Compliant   |
| DETAILED DESCRIPTION             | Shunt Voltage Reference IC 20V ±1% 100mA SOT-23  |
| CURRENT - SUPPLY                 | -  |
| CURRENT - OUTPUT                 | 100mA  |
| CURRENT - CATHODE                | 600μA  |
| BASE PART NUMBER                 | ZTL431   |

## Related Tags

|  |                               |                                    |
|--|-------------------------------|------------------------------------|
| Diodes Incorporated ZTL431AFTA                           | ZTL431AFTA Distributor        | ZTL431AFTA Supplier                |
| ZTL431AFTA Price   | ZTL431AFTA Pictures           | ZTL431AFTA Image                   |
| ZTL431AFTA PDF Datasheet                                 | ZTL431AFTA Download Datasheet | ZTL431AFTA Datasheet               |
| ZTL431AFTA Stock   | Buy ZTL431AFTA                | Buy Diodes Incorporated ZTL431AFTA |
| Diodes Incorporated ZTL431AFTA                           | Diodes Incorporated Supplier  | Diodes Incorporated Distributor    |
| Diodes Incorporated ZTL431AFTA                           | Diodes Inc ZTL431AFTA         | Pericom Semiconductor ZTL431AFTA   |
| Zetex Semiconductors (Diodes Incorporated)<br>ZTL431AFTA |                               |                                    |

## Related Products

|  |  |
|--|--|
|  <p><b>ZTL431AFFT</b><br/>Manufacturers: Diodes Incorporated<br/>Description: IC VREF SHUNT ADJ SOT-23F<br/>In stock: 518217 pcs</p> <p>RFQ</p>  |  <p><b>ZTL431BQE5TA</b><br/>Manufacturers: Diodes Incorporated<br/>Description: IC VREF SHUNT ADJ SOT25<br/>In stock: 409513 pcs</p> <p>RFQ</p>   |
|  <p><b>ZTL431AE5TA</b><br/>Manufacturers: Diodes Incorporated<br/>Description: IC VREF SHUNT ADJ SOT23-5<br/>In stock: 770280 pcs</p> <p>RFQ</p> |  <p><b>ZTL431AQFFTA</b><br/>Manufacturers: Diodes Incorporated<br/>Description: IC VREF SHUNT ADJ SOT23F<br/>In stock: 547132 pcs</p> <p>RFQ</p>  |
|  <p><b>ZTL431ACSTZ</b><br/>Manufacturers: Diodes Incorporated<br/>Description: IC VREF SHUNT ADJ TO92-3<br/>In stock: 4351 pcs</p> <p>RFQ</p>    |  <p><b>ZTL431BE5TA</b><br/>Manufacturers: Diodes Incorporated<br/>Description: IC VREF SHUNT ADJ SOT23-5<br/>In stock: 161611 pcs</p> <p>RFQ</p>  |
|  <p><b>ZTL431BCSTZ</b><br/>Manufacturers: Diodes Incorporated<br/>Description: IC VREF SHUNT ADJ TO92-3<br/>In stock: 3727 pcs</p> <p>RFQ</p>    |  <p><b>ZTL431AH6TA</b><br/>Manufacturers: Diodes Incorporated<br/>Description: IC VREF SHUNT ADJ SOT70-6<br/>In stock: 172573 pcs</p> <p>RFQ</p>  |
|  <p><b>ZTL431BFFTA</b><br/>Manufacturers: Diodes Incorporated<br/>Description: IC VREF SHUNT ADJ SOT-23F<br/>In stock: 214731 pcs</p> <p>RFQ</p> |  <p><b>ZTL431ASE5TA</b><br/>Manufacturers: Diodes Incorporated<br/>Description: IC VREF SHUNT ADJ SOT23-5<br/>In stock: 778045 pcs</p> <p>RFQ</p> |
|  <p><b>ZTL431BH6TA</b><br/>Manufacturers: Diodes Incorporated<br/>Description: IC VREF SHUNT ADJ SOT70-6<br/>In stock: 458473 pcs</p> <p>RFQ</p> |  <p><b>ZTL431BFTA</b><br/>Manufacturers: Diodes Incorporated<br/>Description: IC VREF SHUNT ADJ SOT23-3<br/>In stock: 221296 pcs</p> <p>RFQ</p>   |