



ADI (Analog Devices, Inc.)

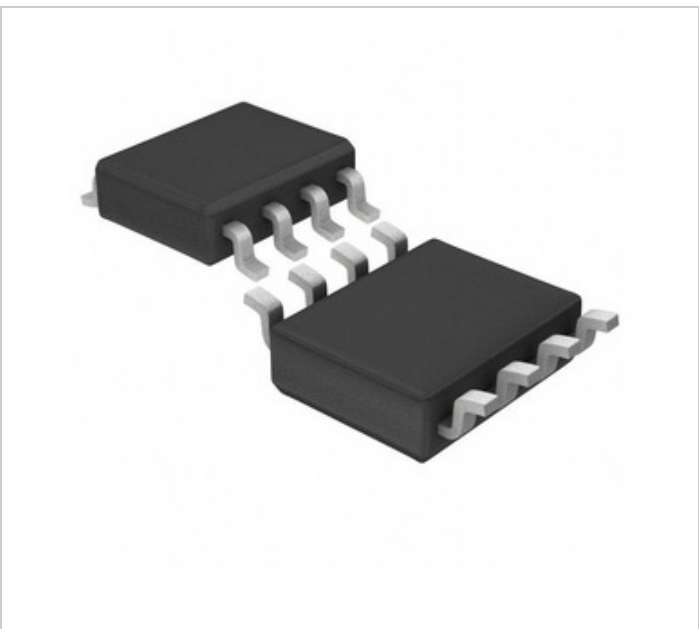



Image may be representation. See specifications for product details.

LT1990IS8-10#PBF

Part Number:	LT1990IS8-10#PBF
Manufacturer/Brand:	ADI (Analog Devices, Inc.)
Product description	+/-250V DIFFERENCE AMPLIFIER
Datasheets:	 LT1990IS8-10#PBF.pdf
Stock Condition	19819 pcs stock
Ship From	Hong Kong
Shipment Way	DHL/Fedex/TNT/UPS/EMS

REQUEST FOR QUOTATION

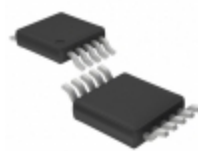






Specifications of LT1990IS8-10#PBF

PART NUMBER	LT1990IS8-10#PBF
MANUFACTURER	ADI (Analog Devices, Inc.)
DESCRIPTION	+/-250V DIFFERENCE AMPLIFIER
LEAD FREE STATUS / ROHS STATUS	
QUANTITY AVAILABLE	19819 pcs
DATA SHEET	 LT1990IS8-10#PBF.pdf
VOLTAGE - SUPPLY, SINGLE/DUAL (±)	2.7 V ~ 36 V, ±1.35 V ~ 18 V
VOLTAGE - INPUT OFFSET	900µV
SUPPLIER DEVICE PACKAGE	8-SO
SLEW RATE	1 V/µs
SERIES	-
PACKAGE / CASE	8-SOIC (0.154", 3.90mm Width)
OUTPUT TYPE	Rail-to-Rail
OPERATING TEMPERATURE	-40°C ~ 85°C
NUMBER OF CIRCUITS	1
MOUNTING TYPE	Surface Mount
MOISTURE SENSITIVITY LEVEL (MSL)	1 (Unlimited)
DETAILED DESCRIPTION	Differential Amplifier 1 Circuit Rail-to-Rail 8-SO
CURRENT - SUPPLY	22mA
CURRENT - OUTPUT / CHANNEL	200µA
AMPLIFIER TYPE	Differential
-3DB BANDWIDTH	110kHz

Related Tags

ADI (Analog Devices, Inc.) LT1990IS8-10#PBF	LT1990IS8-10#PBF Distributor	LT1990IS8-10#PBF Supplier
LT1990IS8-10#PBF Price	LT1990IS8-10#PBF Pictures	LT1990IS8-10#PBF Image
LT1990IS8-10#PBF PDF Datasheet	LT1990IS8-10#PBF Download Datasheet	LT1990IS8-10#PBF Datasheet
LT1990IS8-10#PBF Stock	Buy LT1990IS8-10#PBF	Buy ADI (Analog Devices, Inc.) LT1990IS8-10#PBF
ADI (Analog Devices, Inc.) LT1990IS8-10#PBF	ADI (Analog Devices, Inc.) Supplier	ADI (Analog Devices, Inc.) Distributor
ADI (Analog Devices, Inc.) LT1990IS8-10#PBF	AD LT1990IS8-10#PBF	ADI (Analog Devices, Inc.) LT1990IS8-10#PBF
Analog Devices Inc. LT1990IS8-10#PBF	Analog Devices, Inc. LT1990IS8-10#PBF	

Related Products

 <div>LT1991ACMS#PBF Manufacturers: ADI (Analog Devices, Inc.) Description: IC OPAMP PGA 560KHZ RRO 10MSOP In stock: 27243 pcs <div>RFQ</div></div>	 <div>LT1991ACDD#PBF Manufacturers: ADI (Analog Devices, Inc.) Description: IC OPAMP PGA 560KHZ RRO 10DFN In stock: 23582 pcs <div>RFQ</div></div>
 <div>LT1990HS8#PBF Manufacturers: ADI (Analog Devices, Inc.) Description: IC OPAMP DIFF 105KHZ RRO 8SO In stock: 29970 pcs <div>RFQ</div></div>	 <div>LT1991AIDD#PBF Manufacturers: ADI (Analog Devices, Inc.) Description: IC OPAMP PGA 560KHZ RRO 10DFN In stock: 20406 pcs <div>RFQ</div></div>
 <div>LT1990IS8#TRPBF Manufacturers: ADI (Analog Devices, Inc.) Description: IC OPAMP DIFF 105KHZ RRO 8SO In stock: 24582 pcs <div>RFQ</div></div>	 <div>LT1990IMS8-10#TRPBF Manufacturers: ADI (Analog Devices, Inc.) Description: +/-250V DIFFERENCE AMPLIFIER In stock: 40897 pcs <div>RFQ</div></div>
 <div>LT1990HS8#TRPBF Manufacturers: ADI (Analog Devices, Inc.) Description: IC OPAMP DIFF 105KHZ RRO 8SO In stock: 52194 pcs <div>RFQ</div></div>	 <div>LT1991ACMS#TRPBF Manufacturers: ADI (Analog Devices, Inc.) Description: IC OPAMP PGA 560KHZ RRO 10MSOP In stock: 21343 pcs <div>RFQ</div></div>
 <div>LT1990IS8-10#TRPBF Manufacturers: ADI (Analog Devices, Inc.) Description: +/-250V DIFFERENCE AMPLIFIER In stock: 43641 pcs <div>RFQ</div></div>	 <div>LT1990IS8#PBF Manufacturers: ADI (Analog Devices, Inc.) Description: IC OPAMP DIFF 105KHZ RRO 8SO In stock: 31040 pcs <div>RFQ</div></div>
 <div>LT1991ACDD#TRPBF Manufacturers: ADI (Analog Devices, Inc.) Description: IC OPAMP PGA 560KHZ RRO 10DFN In stock: 38544 pcs <div>RFQ</div></div>	 <div>LT1990IMS8-10#PBF Manufacturers: ADI (Analog Devices, Inc.) Description: +/-250V DIFFERENCE AMPLIFIER In stock: 20774 pcs <div>RFQ</div></div>