



Diodes Incorporated

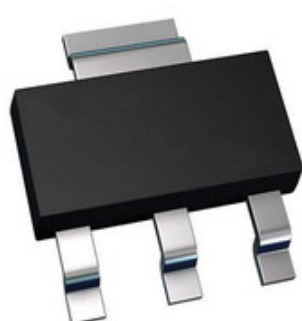


Image may be representation. See specifications for product details.

ZLDO1117QG33TA

Part Number:

71 D01170G33TA

Manufacturer/Brand:

Diodes Incorporated

Product description

IC REG LINEAR 3.3V 1A SOT223

Datasheets:

 ZLDO1117QG33TA.pdf

RoHS Status

✓ Lead free / RoHS Compliant

Stock Condition

327180 pcs stock

Ship From


Hong Kong

Shipment Way

DHL/Fedex/TNT/UPS/EMS

REQUEST FOR QUOTATION

Specifications of ZL D011170G33TA

PART NUMBER	ZLDO1117QG33TA
MANUFACTURER	Diodes Incorporated
DESCRIPTION	IC REG LINEAR 3.3V 1A SOT223
LEAD FREE STATUS / ROHS STATUS	Lead free / RoHS Compliant
QUANTITY AVAILABLE	327180 pcs
DATA SHEET	 ZLDO1117QG33TA.pdf
VOLTAGE DROPOUT (MAX)	1.2V @ 1A
VOLTAGE - OUTPUT (MIN/FIXED)	3.3V
VOLTAGE - OUTPUT (MAX)	-
VOLTAGE - INPUT (MAX)	18V
SUPPLIER DEVICE PACKAGE	SOT-223
SERIES	Automotive, AEC-Q100
PROTECTION FEATURES	Over Current, Over Temperature
PACKAGING	Tape & Reel (TR)
PACKAGE / CASE	TO-261-4, TO-261AA
PSRR	80dB (120Hz)
OUTPUT TYPE	Fixed
OUTPUT CONFIGURATION	Positive
OTHER NAMES	ZLDO1117QG33TADI ZLDO1117QG33TADI-ND ZLDO1117QG33TADITR
OPERATING TEMPERATURE	-40°C ~ 105°C (TA)
NUMBER OF REGULATORS	1
MOUNTING TYPE	Surface Mount
MOISTURE SENSITIVITY LEVEL (MSL)	1 (Unlimited)
LEAD FREE STATUS / ROHS STATUS	Lead free / RoHS Compliant
DETAILED DESCRIPTION	Linear Voltage Regulator IC Positive Fixed 1 Output 3.3V 1A SOT-223
CURRENT - SUPPLY (MAX)	10mA
CURRENT - QUIESCENT (IQ)	10mA
CURRENT - OUTPUT	1A
CONTROL FEATURES	-

Related Tags

Diodes Incorporated ZLDO1117QG33TA	ZLDO1117QG33TA Distributor	ZLDO1117QG33TA Supplier
ZLDO1117QG33TA Price	ZLDO1117QG33TA Pictures	ZLDO1117QG33TA Image
ZLDO1117QG33TA PDF Datasheet	ZLDO1117QG33TA Download Datasheet	ZLDO1117QG33TA Datasheet
ZLDO1117QG33TA Stock	Buy ZLDO1117QG33TA	Buy Diodes Incorporated ZLDO1117QG33TA
Diodes Incorporated ZLDO1117QG33TA	Diodes Incorporated Supplier	Diodes Incorporated Distributor
Diodes Incorporated ZLDO1117QG33TA	Diodes Inc ZLDO1117QG33TA	Pericom Semiconductor ZLDO1117QG33TA
Zetex Semiconductors (Diodes Incorporated) ZLDO1117QG33TA		

Related Products

	ZLDO330T8TA Manufacturers: Diodes Incorporated Description: IC REG LINEAR 3.3V 300MA SM8 In stock: 124142 pcs RFQ		ZLDO330T8TC Manufacturers: Diodes Incorporated Description: IC REG LINEAR 3.3V 300MA SM8 In stock: 5653 pcs RFQ
	ZLDO1117QK50TC Manufacturers: Diodes Incorporated Description: IC REG LINEAR 1A TO252 In stock: 164875 pcs RFQ		ZLDO1117K25TC Manufacturers: Diodes Incorporated Description: IC REG LINEAR 2.5V 1A TO252-3 In stock: 170678 pcs RFQ
	ZLDO1117K18TC Manufacturers: Diodes Incorporated Description: IC REG LINEAR 1.8V 1A TO252-3 In stock: 148029 pcs RFQ		ZLDO1117K7TC Manufacturers: Diodes Incorporated Description: IC REG LDO ADJ 1A TO252-3 In stock: 430233 pcs RFQ
	ZLDO270T8TA Manufacturers: Diodes Incorporated Description: IC REG LINEAR 2.7V 300MA SM8 In stock: 3037 pcs RFQ		ZLDO300T8TA Manufacturers: Diodes Incorporated Description: IC REG LINEAR 3V 300MA SM8 In stock: 3798 pcs RFQ
	ZLDO1117K50TC Manufacturers: Diodes Incorporated Description: IC REG LINEAR 5V 1A TO252-3 In stock: 483573 pcs RFQ		ZLDO285T8TA Manufacturers: Diodes Incorporated Description: IC REG LINEAR 2.85V 300MA SM8 In stock: 4214 pcs RFQ
	ZLDO1117K33TC Manufacturers: Diodes Incorporated Description: IC REG LINEAR 3.3V 1A TO252-3 In stock: 185712 pcs RFQ		ZLDO1117K7TC Manufacturers: Diodes Incorporated Description: IC REG LINEAR POS ADJ 1A TO252 In stock: 476184 pcs RFQ