



Diodes Incorporated

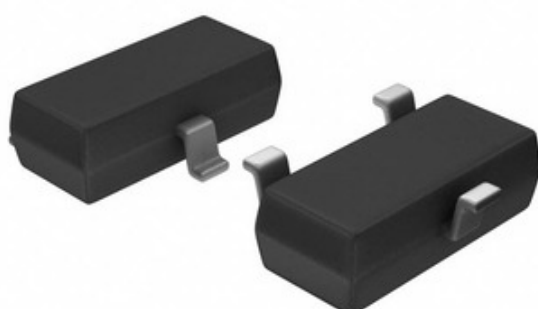


Image may be representation. See specifications for product details.

ZRC400F03TC

Part Number:

7RC400F03TC

Manufacturer/Brand:

Diodes Incorporated

Product description

IC VREF SHUNT 4.096V SOT23

Datasheets:

1.ZRC400F03TC.pdf

2. ZRC400E03TC.pdf

RoHS Status

✓ Lead free / RoHS Compliant

Stock Condition

2713 ncs stock

Ship From

Hong Kong

Shipment Way

DHL /Fedex/TNT/UPS/FMS

REQUEST FOR QUOTATION

Specifications of ZRC400E03TC

PART NUMBER	ZRC400F03TC
MANUFACTURER	Diodes Incorporated
DESCRIPTION	IC VREF SHUNT 4.096V SOT23
LEAD FREE STATUS / ROHS STATUS	Lead free / RoHS Compliant
QUANTITY AVAILABLE	2713 pcs
DATA SHEET	1.ZRC400F03TC.pdf 2.ZRC400F03TC.pdf
VOLTAGE - OUTPUT (MIN/FIXED)	4.096V
VOLTAGE - INPUT	-
TOLERANCE	±3%
TEMPERATURE COEFFICIENT	90ppm/°C
SUPPLIER DEVICE PACKAGE	SOT-23
SERIES	-
REFERENCE TYPE	Shunt
PACKAGING	Tape & Reel (TR)
PACKAGE / CASE	TO-236-3, SC-59, SOT-23-3
OUTPUT TYPE	Fixed
OPERATING TEMPERATURE	-40°C ~ 85°C (TA)
NOISE - 10HZ TO 10KHZ	90µVrms
NOISE - 0.1HZ TO 10HZ	-
MOUNTING TYPE	Surface Mount
MOISTURE SENSITIVITY LEVEL (MSL)	1 (Unlimited)
LEAD FREE STATUS / ROHS STATUS	Lead free / RoHS Compliant
DETAILED DESCRIPTION	Shunt Voltage Reference IC ±3% 5mA SOT-23
CURRENT - SUPPLY	-
CURRENT - OUTPUT	5mA
CURRENT - CATHODE	23µA
BASE PART NUMBER	ZRC400

Related Tags

Diodes Incorporated ZRC400F03TC	ZRC400F03TC Distributor	ZRC400F03TC Supplier
ZRC400F03TC Price	ZRC400F03TC Pictures	ZRC400F03TC Image
ZRC400F03TC PDF Datasheet	ZRC400F03TC Download Datasheet	ZRC400F03TC Datasheet
ZRC400F03TC Stock	Buy ZRC400F03TC	Buy Diodes Incorporated ZRC400F03TC
Diodes Incorporated ZRC400F03TC	Diodes Incorporated Supplier	Diodes Incorporated Distributor
Diodes Incorporated ZRC400F03TC	Diodes Inc ZRC400F03TC	Pericom Semiconductor ZRC400F03TC
Zetex Semiconductors (Diodes Incorporated) ZRC400F03TC		

Related Products

<div data-bbox="56 2768 198 2789"> </div> <div data-bbox="228 2699 345 2725"> ZRC500A01 </div> <div data-bbox="228 2738 537 2811"> <p>Manufacturers: Diodes Incorporated Description: IC VREF SHUNT 5V TO92-3 In stock: 5788 pcs</p> </div> <div data-bbox="299 2828 342 2850"> RFQ </div>	<div data-bbox="758 2729 892 2824"> </div> <div data-bbox="924 2699 1081 2725"> ZRC500A01STZ </div> <div data-bbox="924 2738 1234 2811"> <p>Manufacturers: Diodes Incorporated Description: IC VREF SHUNT 5V TO92-3 In stock: 4787 pcs</p> </div> <div data-bbox="995 2828 1039 2850"> RFQ </div>
<div data-bbox="61 2932 195 3074"> </div> <div data-bbox="228 2923 345 2945"> ZRC500A02 </div> <div data-bbox="228 2962 537 3035"> <p>Manufacturers: Diodes Incorporated Description: IC VREF SHUNT 5V TO92-3 In stock: 3487 pcs</p> </div> <div data-bbox="299 3052 342 3074"> RFQ </div>	<div data-bbox="758 2953 892 3048"> </div> <div data-bbox="924 2923 1096 2945"> ZRC500A01STOA </div> <div data-bbox="924 2962 1234 3035"> <p>Manufacturers: Diodes Incorporated Description: IC VREF SHUNT 5V TO92-3 In stock: 6334 pcs</p> </div> <div data-bbox="995 3052 1039 3074"> RFQ </div>
<div data-bbox="61 3186 195 3264"> </div> <div data-bbox="228 3147 369 3169"> ZRC400F03TA </div> <div data-bbox="228 3186 564 3255"> <p>Manufacturers: Diodes Incorporated Description: IC VREF SHUNT 4.096V SOT23 In stock: 7051 pcs</p> </div> <div data-bbox="299 3277 342 3298"> RFQ </div>	<div data-bbox="758 3177 892 3272"> </div> <div data-bbox="924 3147 1081 3169"> ZRC400A03STZ </div> <div data-bbox="924 3186 1269 3255"> <p>Manufacturers: Diodes Incorporated Description: IC VREF SHUNT 4.096V TO92-3 In stock: 4262 pcs</p> </div> <div data-bbox="995 3277 1039 3298"> RFQ </div>
<div data-bbox="61 3402 195 3497"> </div> <div data-bbox="228 3371 400 3393"> ZRC500A01STOB </div> <div data-bbox="228 3406 537 3479"> <p>Manufacturers: Diodes Incorporated Description: IC VREF SHUNT 5V TO92-3 In stock: 5547 pcs</p> </div> <div data-bbox="299 3501 342 3522"> RFQ </div>	<div data-bbox="758 3410 892 3488"> </div> <div data-bbox="924 3371 1067 3393"> ZRC400F02TC </div> <div data-bbox="924 3406 1262 3479"> <p>Manufacturers: Diodes Incorporated Description: IC VREF SHUNT 4.096V SOT23 In stock: 6359 pcs</p> </div> <div data-bbox="995 3501 1039 3522"> RFQ </div>
<div data-bbox="61 3635 195 3712"> </div> <div data-bbox="228 3596 369 3617"> ZRC400F02TA </div> <div data-bbox="228 3630 564 3704"> <p>Manufacturers: Diodes Incorporated Description: IC VREF SHUNT 4.096V SOT23 In stock: 199441 pcs</p> </div> <div data-bbox="299 3725 342 3747"> RFQ </div>	<div data-bbox="758 3635 892 3712"> </div> <div data-bbox="924 3596 1067 3617"> ZRC400F01TC </div> <div data-bbox="924 3630 1262 3704"> <p>Manufacturers: Diodes Incorporated Description: IC VREF SHUNT 4.096V SOT23 In stock: 5548 pcs</p> </div> <div data-bbox="995 3725 1039 3747"> RFQ </div>
<div data-bbox="61 3859 195 3932"> </div> <div data-bbox="228 3820 369 3841"> ZRC400F01TA </div> <div data-bbox="228 3854 564 3928"> <p>Manufacturers: Diodes Incorporated Description: IC VREF SHUNT 4.096V SOT23 In stock: 178712 pcs</p> </div> <div data-bbox="299 3949 342 3971"> RFQ </div>	<div data-bbox="758 3846 892 3941"> </div> <div data-bbox="924 3820 1096 3841"> ZRC500A02STOA </div> <div data-bbox="924 3854 1234 3928"> <p>Manufacturers: Diodes Incorporated Description: IC VREF SHUNT 5V TO92-3 In stock: 4367 pcs</p> </div> <div data-bbox="995 3949 1039 3971"> RFQ </div>